

# Empore™

## Solid Phase Extraction Disks

### C8 (Octyl) and C18 (Octadecyl)

#### General Information

Empore™ Solid Phase Extraction (SPE) Disks provide an efficient alternative to liquid/liquid extraction for sample preparation. A proprietary process is used to entrap adsorbent particles into a matrix of inert PTFE to create a mechanically stable sorbent disk. The disks can be used for purification and concentration of analytes from aqueous samples.

Empore SPE disks provide a sample prep solution for large volume aqueous samples. The disk format provides a large surface area for sorbent/sample contact. Fast flow rates and high throughput may be realized with use of an Empore solid phase extraction disk.

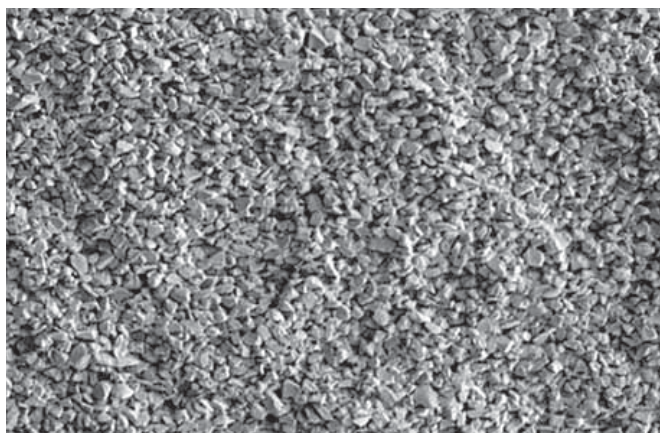
#### Product Information

Bonded silica sorbents are commonly used for the solid phase extraction of analytes from complex sample matrices. Functional groups, such as octadecyl (C18) and octyl (C8) can be bonded to the silica surface to provide nonpolar interactions. Each of these sorbents exhibits unique properties of retention and selectivity for a particular analyte. The choice of which sorbent is best for a particular method will be influenced by the percent recovery of analyte from the sample matrix and the cleanliness of the resulting chromatography.

C8 and C18 bonded silica sorbents combine good retention capacity with high recoveries. These bonded silicas are endcapped to minimize polar interactions. Empore™ C8 and C18 Solid Phase Extraction Disks are recommended for moderately nonpolar and strongly nonpolar analyte extractions, respectively. The versatile Empore™ C18 and C8 products are effective for extracting semi-volatile and nonvolatile organic compounds.

#### Suggested Product Applications

| Sorbent           | Suggested Applications  | Product Number |       |
|-------------------|---|----------------|-------|
|                   |   | 47 mm          | 90 mm |
| C8 Bonded Silica  | EPA Method 549.1 Diquat and Paraquat  | 2214           | 2314  |
|                   | EPA Methods <ul style="list-style-type: none"> <li>• 506 Phthalate &amp; Adipate Esters</li> <li>• 508.1 Chlorinated Pesticides, Herbicides and Organohalides</li> <li>• 525.2 Semi-Volatile Organic Compounds</li> </ul> |                |       |
| C18 Bonded Silica | • 550.1 Polynuclear Aromatic Hydrocarbons   | 2215           | 2315  |
|                   | • 608 ATP 3M0222 Organochlorine Pesticides and PCBs   |                |       |
|                   | • 1613B Dioxins and Furans  |                |       |
|                   | • Other EPA Methods   |                |       |



High Density (HD) Empore™ Membrane (10-12 µm particle size)

## Extraction Method with C8 or C18 Disk

### Step A: Sample Preparation

- Microbiological growth can be retarded by lowering sample pH to 2.
- Filter Aid 400 and/or prefiltration may be helpful if the sample contains excessive suspended solids.

### Step B: Extraction Disk Conditioning

Disk conditioning is critical for a successful extraction. Conditioning provides a good interface between the sorbent and the sample matrix. **Failure to condition the extraction disks properly will result in erratic and low recoveries.**

1. Center the extraction disk on the base of the filtration apparatus and clamp the reservoir on top of the disk.\*
2. Wash the disk with 10 mL of elution solvent.
3. Apply vacuum to dry the disk.
4. Add 10 mL methanol to the disk. Apply vacuum and pull approximately 1 mL through the disk. Vent the vacuum and allow the disk to soak for 30 seconds.
5. Apply vacuum and draw methanol through the disk leaving a small amount of methanol on surface.
6. Add 50 mL of reagent grade water to the reservoir, apply vacuum and draw the water through the disk until the water surface just covers the disk surface.

If disk should become dry while conditioning with methanol or water, repeat steps 4 through 6.

\* Place a vial in the vacuum apparatus to collect and dispose of wash and conditioning solvents. Remove vial prior to sample extraction.

### Step C: Sample Extraction

- Pour the sample into the reservoir and apply vacuum to draw through the disk. Flow rate is dependent on vacuum setting and solids content of the sample. However, recoveries are not affected by flow rate.
- After sample extraction is complete, remove residual water from the disk by applying vacuum to dry the disk for approximately 5-20 minutes.

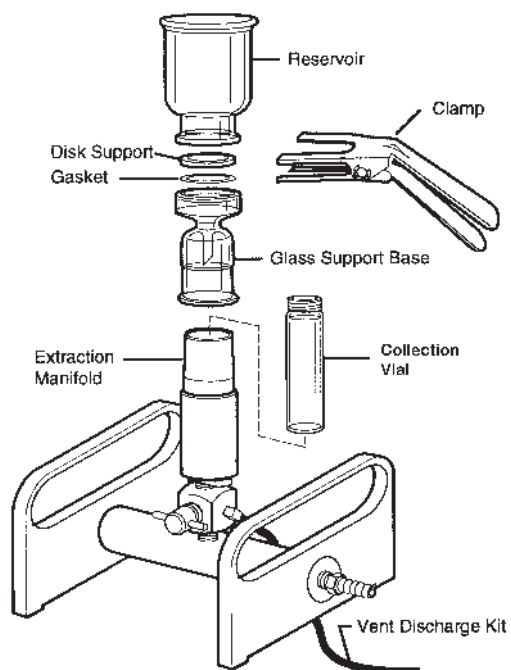
### Step D: Sample Elution

Two elutions with 10 mL solvent are recommended.

- Place tip of filter base into the collection vessel (see diagram).
- Add 10 mL elution solvent to sample container, carefully rinsing the sides. Transfer solvent from sample container to reservoir with a pipet, washing the walls of the reservoir in the process.
- Apply vacuum and draw approximately 1 mL elution solvent through the disk. Vent the vacuum and allow the disk to soak for 30 seconds before reapplying vacuum to dry the disk.
- Repeat this process with a second aliquot of eluting solvent.

**Note: When using solvents or other chemicals, be sure to read and follow the manufacturer's precautions and directions for use.**

## Disk Manifold System Setup



## Volume Guidelines

The small bed mass of sorbent in the Empore™ membrane allows for the use of smaller solvent volumes compared with traditional SPE products. A general guide to solvent volumes for a disk SPE method using reversed phase sorbents (C18 and C8) is listed in the table below.

Each assay will need some further optimization in terms of selecting the best elution solvent (commonly methylene chloride, ethyl acetate, methanol or acetonitrile).

EPA Methods will require specific reagents; please refer to those methods when using the Empore Disks for agency reporting.

### Volume Guidelines: Reversed Phase (C18 and C8)

| Step      | Solvent         | 47 mm disk  | 90 mm disk  |
|-----------|-----------------|-------------|-------------|
| Condition | Methanol        | 10-15 mL    | 20-30 mL    |
| Optional: | Reagent water   | 10-50 mL    | 20-100 mL   |
| Aqueous   | Sample Solution | 100-1000 mL | 500-2000 mL |
| Elute     | Organic         | 10-15 mL    | 20-30 mL    |

**Note:** Suggested solvent volumes will vary according to the disk diameter, the amount of filter aid material, the analyte, the analyte's affinity for the chosen sorbent, and the strength of the eluting solvent. A general guide for solvent volumes is to completely cover the disk and bed of filter aid, such that 2-3 mm of solvent is above the top surface.

## Product Characteristics

|               |  |
|---------------|--|
| Composition   | 90% or greater sorbent particle<br>10% or less PTFE          |
| Thickness     | 0.50 mm ± 0.05 mm  |
| SPE Flow Rate | < 10 min/L DI H <sub>2</sub> O @ 25°C @ 20 inHg (47 mm disk) |
| Particle Size | 12 µm (nominal)  |
| Solvents      | Compatible with all organic solvents                         |
| pH Range      | Stable between 2 and 12 under normal use conditions          |

## Important Notice

CDS Analytical MAKES NO WARRANTIES, EXPRESS OR IMPLIED, INCLUDING, BUT NOT LIMITED TO, ANY IMPLIED WARRANTY OF MERCHANTABILITY OR FITNESS FOR A PARTICULAR PURPOSE. Since a variety of factors can affect the use and performance of a CDS Analytical product in a particular application, some of which are uniquely within the user's knowledge and control, user is responsible for determining whether or not the CDS Analytical product is fit for a particular purpose and suitable for user's method of application.

## Warranty

Seller warrants its equipment against defects in workmanship and material for a period of 12 months from date of shipment from the factory under normal use and service and otherwise when such equipment is used in accordance with instructions furnished by Seller and for purposes disclosed in writing at the time of purchase, if any. Any unauthorized alteration or modification of the equipment by Buyer will void this warranty. Seller's liability under this warranty shall be limited to the replacement or repair, F.O.B., point of manufacture, of any defective equipment or part which, having been returned to the factory, transportation charges prepaid, has been inspected and determined by Seller to be defective. THIS WARRANTY IS IN LIEU OF ANY OTHER WARRANTY, EITHER EXPRESSED OR IMPLIED, AS TO DESCRIPTION, QUALITY, MERCHANTABILITY, FITNESS FOR ANY PARTICULAR PURPOSE OR USE, OR ANY OTHER MATTER. Under no circumstances shall Seller be liable to Buyer or any third party for any loss of profits or other direct or indirect costs, expenses, losses or consequential damages arising out of or as a result of any defects in or failure of its products or any part or parts thereof or arising out of or as a result of parts or components incorporated in Seller's equipment but not supplied by the Seller.

## Technical Information and Data

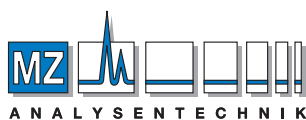
Technical information and data, recommendations, and other statements provided by CDS Analytical are based on information, tests, or experience which CDS Analytical believes to be reliable, but the accuracy or completeness of such information is not guaranteed. Such technical information and data are intended for persons with knowledge and technical skills sufficient to assess and apply their own informed judgment to the information. No license under any CDS Analytical or third party intellectual property rights is granted or implied with this information.

## Safety and Disposal

Always follow safe handling practices while processing Empore products as applicable to your use. Always wear appropriate personal protective equipment while processing Empore products as applicable to your use. Dispose of used Empore products per requirements of your process. Alteration or addition of other materials to Empore products may require unique disposal protocols. Always dispose of used product in accordance with federal, state and local requirements.

CDS Analytical, LLC Headquarter:  
465 Limestone Road  
Oxford, PA 19363-0277 USA  
Tel.: 1-800-541-5963 (US); 1-610-932-3636 (International)  
Website: [www.cdsanalytical.com](http://www.cdsanalytical.com)  
Email: [info@cdsanalytical.com](mailto:info@cdsanalytical.com)

Empore is a trademark of CDS Analytical. Used under license.  
© CDS Analytical LLC. 2018 All rights reserved.  
GN-18 10/23 5K Printed in USA



AUTHORIZED DISTRIBUTOR

MZ-Analysentechnik GmbH  
Barcelona-Allee 17 • D-55129 Mainz  
Tel +49 6131 880 96-0  
Fax +49 6131 880 96-20  
e-mail: [info@mz-at.de](mailto:info@mz-at.de)  
[www.mz-at.de](http://www.mz-at.de)

**Note:** Empore Solid Phase Extraction Products are intended for solid phase extraction during scientific research only. These products are not intended for use in medical devices or in assessment and treatment of clinical patients.