

MV5

Automatic Parallel Concentrator



MV5

Automatic Parallel Concentrator

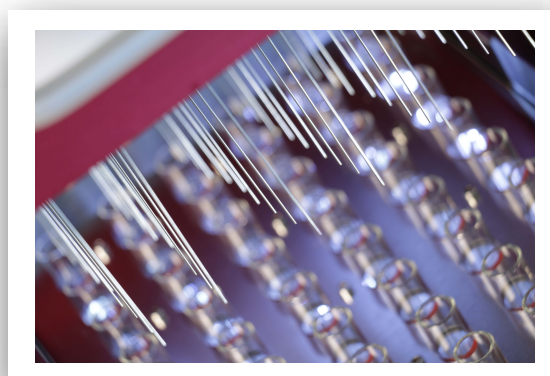
MV5 is an automatic multi-channel and multi-functional parallel concentration instrument designed by LabTech. Sample concentration is heated through water bath. With the functions of nitrogen sweeping, needle level adjustment and visible concentration process, it is a highly efficient, fast, convenient, flexible and practical instrument, which can be used in various laboratories.



Technical Features

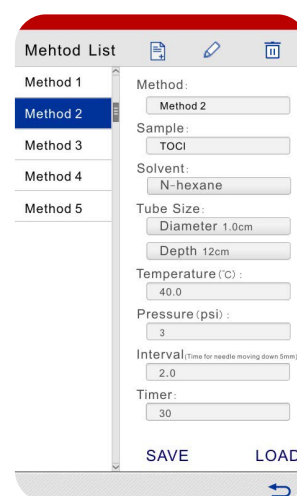
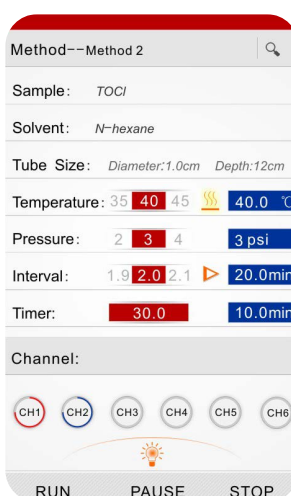
High Throughput

- Fifty-four sample positions. It is flexible, convenient and easy to use.
- Front window with backlight for sample viewing.

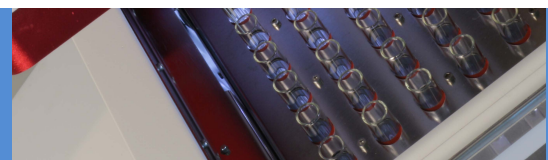


Intelligence Control

- 7" easy touch-screen control panel with real-time display.
- Separate control of each channel.
- Adjustable bath temperature and gas flow rate of each channel.
- It supports method modification during operation.

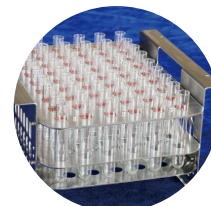
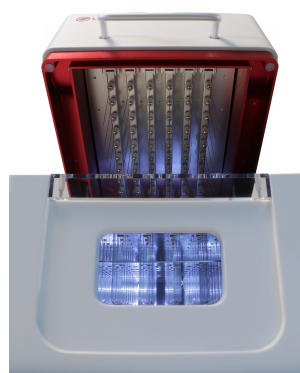
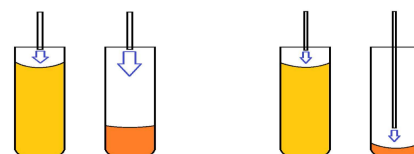


Automatic Parallel Concentrator



- Fast concentration with automatic adjustment of nitrogen needle and needle level changes with the sample volume.
- Visible concentration process with front window and lights inside.
- Auto-lock for safety.
- Auto stop when cover is open
- Run will resume automatically after closing the cover.
- Fast-plug of bath drain outlet for easy cleaning.
- Alert for over-limit water level.

MV5 save
22% time



Customizable Racks

- Different size racks for various tubes from 10ml to 200ml, can support GPC orSPE sample vials.
- Customized racks are available.

Optional racks and tubes

Item	Tube Volume	Size	Position
1	10ml	φ15.5×80	54
2	10ml	φ15.5×100	54
3	20ml	φ18×135	54
4	40ml	φ27.5×95	24
5	50ml	φ29×115	24
6	60ml	φ27.5×140	24
7	60ml	φ32×120	24
8	50ml	φ40×120	12
9	200ml	φ65×120	6

Concentration and drying time for common solvents

Solvent	Tube Size	Start Volume	Nitrogen Pressure	Waterbath Temp (°C)	Interval of Nitrogen needle decreasing (min)	Total Time (min)
Acetone	1.5x10cm	7ml	12psi	50°C	0.7	9.5
Dichloromethane				40°C	1	11
N-hexane				60°C	0.3	4.5
Methanol				60°C	1	12.8
Ethyl acetate				65°C	0.6	7.6
Acetonitrile				65°C	1	14.2